

# Advanced Environmental Instrumentation

## Harnessing the Power of Mobile Computing



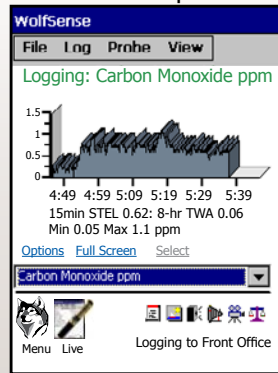
✓ Surveyed

✓ Documented

✓ Reported



Live Graph



Example Screens

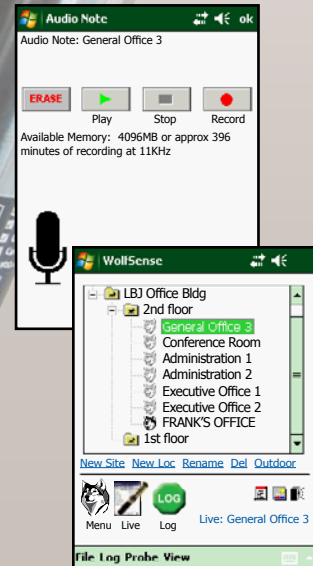
Live Display

WolfSense	
File	Log Probe View
TVOC	186 ppb
Carbon Dioxide	593 ppm
Carbon Monoxide	1.2 ppm
Hydrogen Sulfide	0.49 ppm
AP	-0.3 Pa
Barometric	1013.2 mbar
Temp1	21.0 °C
Temp2	22.3 °C
AT	1.3 °C

Menu Live: Plant\Front Office



Audio Notes



Site/Location Description

# ADVANCEDSENSE®

Environmental Test Meter



**GRAYWOLF®**  
SENSING SOLUTIONS  
PH. 1-203-402-0477  
FAX: 1-203-402-0478

EMAIL:  
SALESTEAM@GRAYWOLFSENSING.COM

WEBSITE:  
WWW.GRAYWOLFSENSING.COM

**GrayWolf is transforming the way that environmental measurements are taken. The AdvancedSense meter runs highly advanced, very user-friendly application software. Display, data-log and annotate (on-site) a broad range of parameters with a single, rugged, cutting edge instrument.**

- Simultaneously connect 1 or 2 GrayWolf DirectSense® probes (plus a particulate or HCHO meter) with up to 6 sensors per probe (even more probes with Y-adapters)
- Available sensors; auto-zeroing differential pressure, barometric pressure, VOCs (PID), CO<sub>2</sub> (NDIR), %RH, °C / °F, CO, O<sub>3</sub>, NH<sub>3</sub>, H<sub>2</sub>S, NO, NO<sub>2</sub>, SO<sub>2</sub>, Cl<sub>2</sub>, EtO, HCN, HF, HCl and other parameters
- 2 thermocouple sockets (standard) for air, liquid, surface temperature measurement (solo or differential)
- Backlit color touch screen with virtual keyboard (for text input such as descriptive data file names)
- Feature rich with productivity tools that make your environmental surveys more efficient, more detailed, more reliable:
  - Voice notes with optional audio to text transcription
  - Optional camera for photo/video notes
  - Text notes, field (Word template) notes, event notes and more in-situ
  - On-board educational info, application docs, sensor tips and more
  - Data transfer & reporting software for trend graphs, note management & much more
  - **Optional WiFi access via GrayWolfLive™**
- Highly intuitive and extremely Easy-To-Use



# ADVANCEDSENSE®

## Environmental Test Meter

### SPECIFICATIONS:

(for additional sensor/probe specifications refer to GrayWolf's DirectSense®, pitot tube and thermocouple brochures)

#### General:

**Dimensions:** 96.0mm (3.8in.) w. x 177mm (7.0in.) h. x 47.0mm (1.8in.) d.  
**Construction:** Rugged polycarbonate plastic with rubberized side grips. IP64  
**Weight:** 700gr (1lb 8.5oz.) Add 50gr (1.5oz.) for auto-zeroing  $\Delta P$  option  
**Screen Size:** 785mm (3.5in.) QVGA 240 x 320 TFT color touch screen with backlight  
**Memory:** 4GB for data-logging (1 million+ readings) and notes (photo/video/audio); plus 2GB for program, help videos, documents and auto data backup  
**Audio:** Integral electret microphone (on front) and 4 ohm speaker (on back)  
**Mounting:** 1/4" - 20 thread (on back) for belt clip, etc. (& for included mini tripod/stand)  
**Operating Range:** -10°C to 50°C (-15°F to 122°F), 0 to 100 %RH non-condensing

#### Connectors:

2 x Lemo 8 pin for GrayWolf DirectSense probes (the AdvancedSense will support up to 4 x DirectSense probes with Y-adapters)  
 1 x Lemo 7 pin for particulate, 3rd party meters or RH-AS2 %RH, °C / °F probe  
 2 x sub-mini type K thermocouple temperature sockets. Range -80 to 1100°C (-110 to 2010°F)  
 1 x Lemo 7 pin socket for formaldehyde meter, camera or optional USB key download cable  
 1 x USB mini B socket. 1m USB B to USB A download cable supplied as standard  
 1 x 9V power adapter socket  
 Optional; 2 x 4mm posts for differential pressure tubing

#### Power:

**Battery:** 4250 mAh Lithium Ion rechargeable  
**Battery Life:** 32+ hours typical for new battery with backlight off (and probes self-powering)  
 The AdvancedSense can power DirectSense probes. Battery life will vary when powering probes or pressure sensors  
**Recharge time:** 4 hours typical. LED displays charging/fully charged status  
**Power supply:** 100/240VAC, 50-60Hz external charger. Specify local plug  
**All specifications are subject to change without further notice**

#### Optional Built-in Sensors:

	Differential Pressure ( <b>DP-702LH</b> )	Barometric Pressure ( <b>BP-101</b> )*
Range	$\pm 10,000\text{Pa}$ , $\pm 40\text{ inH}_2\text{O}$ , $\pm 1000\text{ mmH}_2\text{O}$ , $\pm 100\text{ mbar}$ , $\pm 70\text{ mmHg}$	600 to 825 mmHg, 800 to 1100mBar, 23.50 to 32.50 inHg, 0.80 to 1.10atm
Resolution	0.1 Pa, 0.001 inH <sub>2</sub> O, 0.01 mmH <sub>2</sub> O, 0.001 mbar, 0.001 mmHg	0.1 mmHg, 0.1 mBar, 0.01 inHg, 0.01 atm $\pm 0.1\%$ rdg
Accuracy (auto-zeroing enabled)	$\pm 1\%$ of rdg $\pm 0.1\text{Pa}$ up to 250Pa, $\pm 1\%$ rdg $\pm 4\text{Pa}$ >250Pa ( $\pm 1\%$ of rdg $\pm 0.001\text{ inH}_2\text{O}$ , $\pm 1\%$ rdg $\pm 0.015\text{ inH}_2\text{O}$ >1.000 inH <sub>2</sub> O)	

Differential Pressure is auto-zeroing (every 2 minutes by default but zeroing frequency is user adjustable)

\*The barometric pressure sensor, when installed, will compensate mass concentration readings ( $\mu\text{g}/\text{m}^3$ ) for pressure changes.

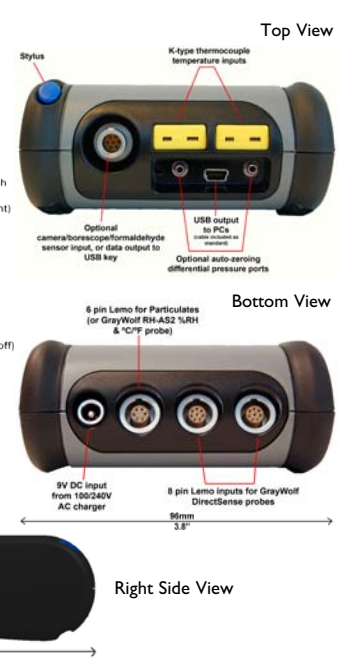
WolfSense® PC data transfer and analysis software supplied as standard



### MEASURE SMART



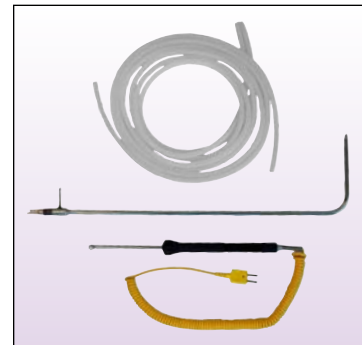
### REPORT EFFICIENTLY



2m dual tubing is supplied with optional differential pressure sensor. GrayWolf offers a selection of pitot tubes for air velocity and K thermocouples for temperature measurement.



▲ Optional **ACC-CAM-PI** for photo and video capture tagged to data files.



**PCC-AS01** pouch with neck strap and belt loop for hands-free surveys



▲ **PCC-10A** Hardshell Security case holds AdvancedSense, probes & accessories. Smaller/larger cases also available.



WiFi Card and Remote Access Software, Advanced Reporting Software, Calibration kits and other accessories are available from GrayWolf. View them online at [accessories.graywolvesensing.com](http://accessories.graywolvesensing.com)

**GRAYWOLF SENSING SOLUTIONS**  
 6 RESEARCH DRIVE (WORLDWIDE HEADQUARTERS)  
 SHELTON, CT 06484 USA  
 PH. (1)203-402-0477  
 800-218-7997  
 FAX: (1)203-402-0478

EMAIL: [SALESTEAM@GRAYWOLFSENSING.COM](mailto:SALESTEAM@GRAYWOLFSENSING.COM)

[WWW.GRAYWOLFSENSING.COM](http://WWW.GRAYWOLFSENSING.COM)

**GRAYWOLF SENSING SOLUTIONS**  
 ANNACOTTY INDUSTRIAL PARK, UNIT 1C  
 ANNACOTTY, COUNTY LIMERICK  
 IRELAND  
 PH. (353) 61358044  
 FAX: (353) 61358160